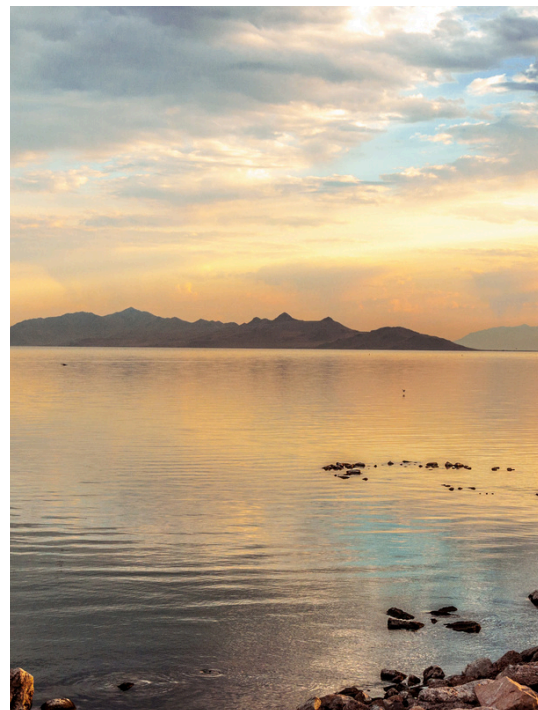


WELCOME TO YOUR NEXT OUTDOOR WATER ADVENTURE

WITH SPHERE RENTAL, LLC



18FT
SEA-DOO
SWITCH
CRUISE

We're so glad you're here

WELCOME



Contact Info:

Steve: (435) 840-5586

Melissa: (801) 638-8191

SphereRental@yahoo.com

Quick RV Info:

Sea Doo Switch Cruise

Height: 6.75ft (boat only, top down)

Length: 21ft

Width: 7.5ft



Hello There!

Sphere Rental, LLC is a small family run business located in the peaceful town of Stansbury Park, UT.

We started this business to provide more opportunities for our family to spend time together in the great outdoors.

From camping to fishing, hiking to exploring new places, we want to give other families these same experiences.



We take pride in providing clean, well-maintained equipment for our customers.

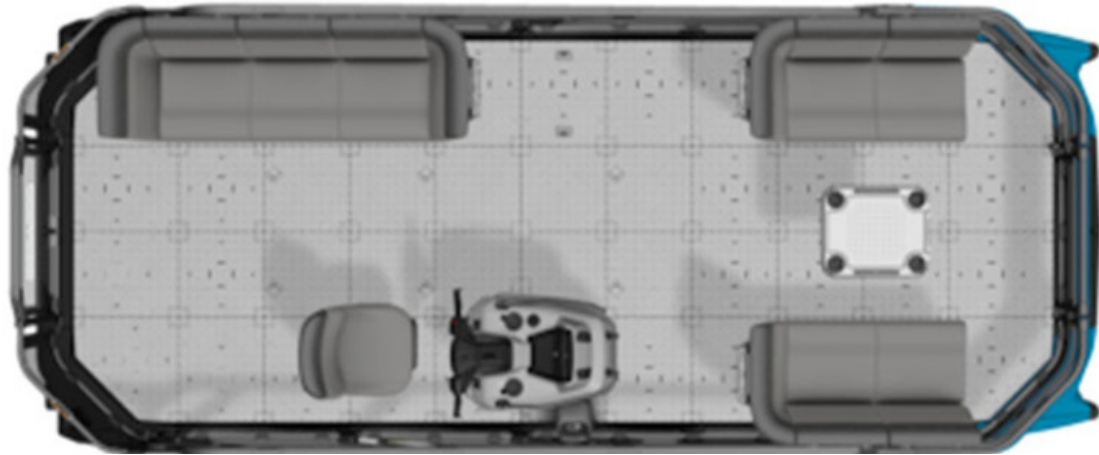
Our kitchen essentials such as dishes, silverware, pots, cutting boards and knives are always sanitized after each rental. We even ozone our rentals that have had pets.

Furthermore, high-quality linens are provided and sanitized between each rental.

We strive to make your vacation enjoyable. If there is anything we can do to make it even better, please let us know!

Steve & Melissa

2022 SEA-DOO SWITCH CRUISE



LENGTH

Total exterior length 21ft.



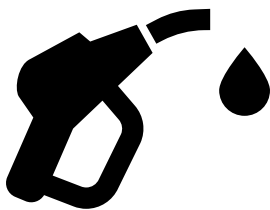
HEIGHT

Total exterior boat height 6.75ft



WIDTH

Total exterior width 7.5ft



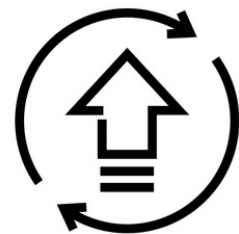
FUEL CAPACITY

29 gallon fuel capacity



MAX CAPACITY

7 People
not more than 1,000 lbs



EQUIPMENT WEIGHT

Dry Boat Weight 2,206 lb
Trailer Weight 629 lb

SEA-DOO

SWITCH CRUISE

TRI HULL = SAFER

The Sea-Doo Switch has a tri-hull design which allows the look of a pontoon, but the stability of a v-hull boat. This design will improve how the pontoon handles the water and how you feel when controlling it.



SIMPLE STEERING

While driving this pontoon, you will notice the familiarity of a jet ski at the helm; the wheel is a jet skis handlebar, creating a simple docking and handling experience for captains.



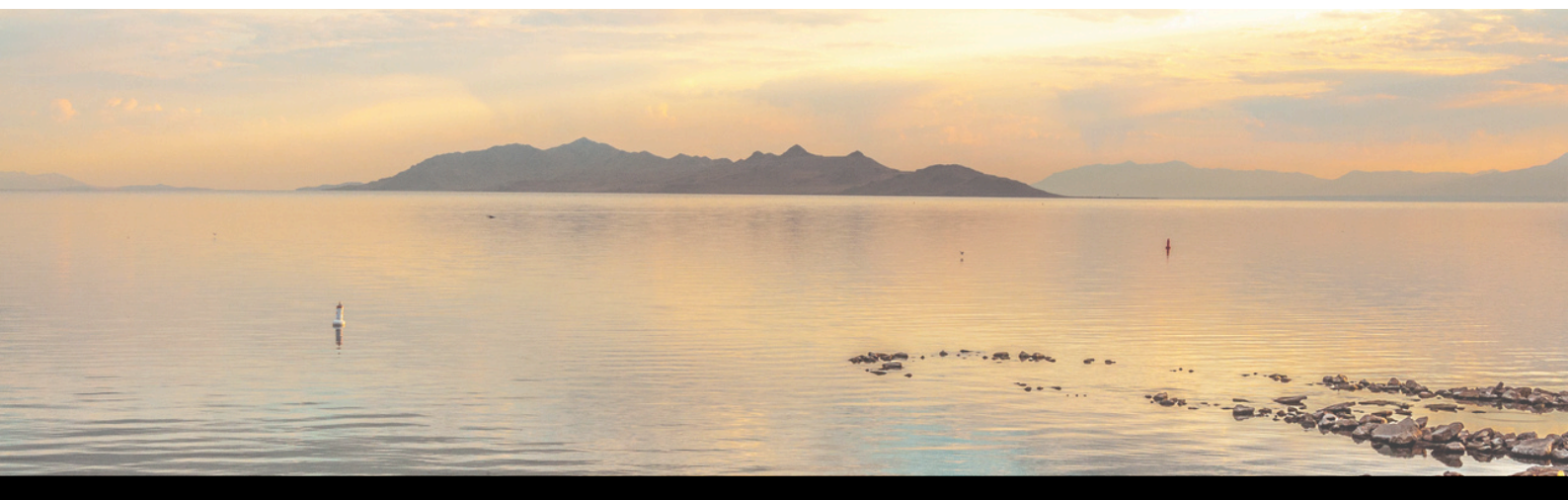
EASY TO CUSTOMIZE

The seating and tables can be rearranged to a wide range of configurations, with ease. The modular deck makes it easy for you to switch up the layout on your boat just by moving the grid-like squares.



EASY TO TOW

The Sea Doo Switch is lightweight and can be pulled by mid sized SUVs. It is responsive and easy to maneuver.



CONTENTS

PICK UP

What To Expect

1



DRIVING

A Few Tips
and Cautions

2



LAUNCHING

How To Launch A Boat

3



GETTING

FAMILIAR

Steering, GPS, Bimini,
Docking & Anchoring

4

SAFETY

Tips & Cautions

5



BOATING ETIQUETTE

Some Friendly Reminders

6

7

LOADING UP

Loading the Boat &
Prep for Travel



8

CLEANING

A Few Tips
And Information

9

RETURNING

When &
How To



10

PLACES TO SEE

Some Of Our Favorite
Places To Visit



11

TERMS & COND.

Terms and Conditions

12

FEEDBACK

Your Feedback Is Vital!





lowA
2022

PICK UP

WHAT TO EXPECT

1

WHAT TO EXPECT AT

PICK UP

To collect the boat, ensure you have both a valid driver's license and your insurance card on hand. We cannot release a boat without both items.

We complete an inventory prior to your arrival of all included equipment. And take photos of the condition and the equipment.

At pick up, we go through the boat together to inspect, mark any existing damage, and show you how the equipment works. We will also take a short test drive with all verified drivers.

Once that's complete, you are all set to head out on your water adventure!





DRIVING WITH A TRAILER



DRIVING TIPS

MAX SPEED

Do Not go over 65 miles per hour while towing.
It will take you longer to stop when pulling a trailer
than it would in a regular vehicle.



FOLLOWING DISTANCE

Keep a minimum of 100 feet between you and the vehicle
in front of you. This is equal to five stripes on the highway.



PLAN AHEAD

You should know your route and road conditions
before you start your trip. Check regularly during
your route to ensure there are no major storms
heading in.



RIGHT TURNS

Give yourself extra room when making right hand turns.
The back end will make a much tighter turn than the front.
Make sure you slow down for any turns.



CANYONS & HILLS

Make sure to pay attention to your speed when going
down hills and canyons.
Do not hold the break down the entire way down the hill-
this will over heat the breaks.



DRIVING CAUTIONS



DROWSY DRIVING

Do not drive drowsy. Driving an RV requires your full attention, especially if you are new to driving RVs. To you, it's all pretty new, which means you need to be alert. It only takes one moment of being lax to get you in an accident.



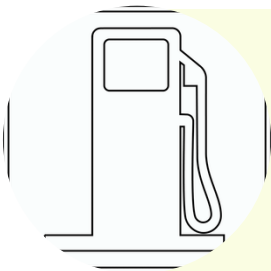
STICK TO ROADS

Refrain from driving on anything other than a well-maintained road, including dirt roads and paths. Ensure all roads have a smooth surface free of ruts or potholes. And kindly remember, never drive on a dry riverbed. These are not roads and are unsafe.



BACKING UP

Only back up when you have someone able to be a spotter behind you. Do not back up in crowded locations.



GAS STATIONS

Do not take a trailer to a gas station. These are too difficult to maneuver in. Only use truck stops that are made for larger vehicles.



FILLING UP

We will take care of refueling the boat after your trip. (You will be assessed the cost of fuel). We provide this service free of charge to ensure every rental is completely topped off as the gague can be difficult to read.

JUST A FEW THINGS TO REMEMBER



TROUBLESHOOTING

If You have any issue during your rental, please call
Steve ASAP at: 435-840-5586
So that He can help get you on your way!

TIRE TROUBLES

Please remember, while on your trip, you are responsible for the tires. Check the tire pressure at the beginning of your trip. If one blows or becomes damaged, you are required to replace it with the same tire.



ACCIDENTS OR DAMAGE

In the event of an accident, your safety is paramount. Please prioritize your well-being above all else. Locate the Accident/Damage form located in the manual and complete it promptly. Additionally, ensure to take comprehensive photos of the incident (including other vehicles) and notify us as soon as possible. It is imperative that you initiate an insurance claim with your vehicle insurance provider to address any potential damages.

HOT WEATHER

Please note that it is especially important to stay hydrated while out on the water. While out on the water, drink 5-8 ounces every 15-20 minutes. Your body can only absorb so much water at one time! If you try to drink a lot of water all at once, most of it will pass through you without hydrating your body. In the heat of the summer, you can lose up to 1 liter an hour through sweating and evaporation.





Deer Creek Reservoir, UT
2022

— LAUNCHING

3

LAUNCHING A BOAT



Load all your gear into the boat—life jackets, fishing tackle, coolers, tubes, platforms, etc.

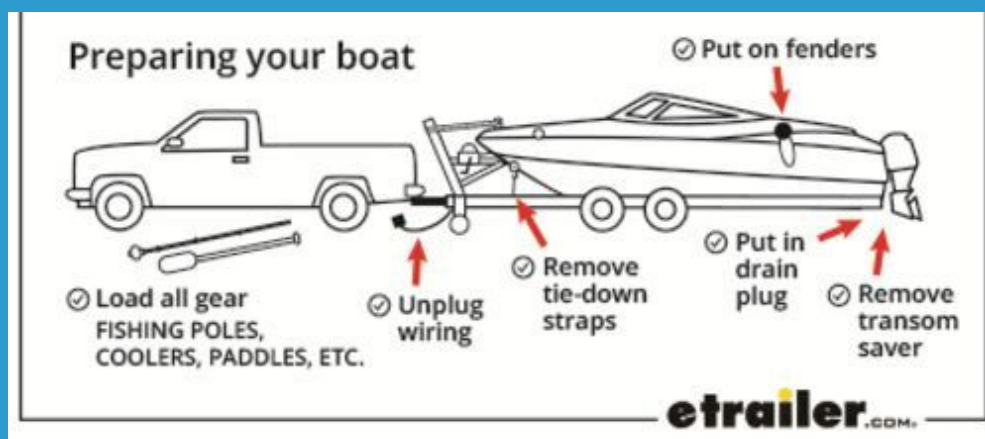
Arriving at the boat launch

Upon arriving at the launch area, check that your drain plugs (3) are properly installed. Remove any covers, tie-down straps and attach your dock bumpers. Attach docking lines to the cleats so they're ready to go. Disconnect the front winch strap, leaving the safety strap connected. Attach the lead line to the rear of the boat.

Launching the Switch

When it's your turn to launch, unplug the trailer lights, pull around and through your launch lane far enough to give yourself a straight approach backing into the water. The best advice here is to take your time. It may take a couple tries to back into the water, and that's perfectly OK. The **more you launch and load a boat**, the better you'll get at backing the trailer.

**Remember, boat ramps are often very slippery.
Use caution moving around the launch area.**



**Watch a video on how to
Launch and Load the Boat!**



Back your vehicle far enough into the water so the rear of the Switch just begins to float. Put your vehicle in “park” and set the parking brake before you do anything else.

With the parking brake set, you can exit the vehicle and disconnect the trailer winch line from the front of the Switch. Once disconnected, have the second person pull the Switch free from the trailer with the lead line connected to the rear of the pontoon.

Float the Switch clear of the immediate launch area so others can launch their boats while you’re parking your vehicle.

Before you go

Prior to beginning your Sea-Doo Switch adventure, it’s a good idea to open the engine compartment access and run the blower for a few minutes. This will remove any gas fumes that may cause a potential hazard. One person can do this while the other parks the vehicle.

Before leaving the dock, give yourself one last check to make sure you’ve got enough PFDs for everyone, all the gear you need is on board and your path away from the dock is clear.

That’s it! Let the good times on the water roll!







**GET FAMILIAR
WITH
OUR BOAT**

4

STEERING COLUMN

Steering is effortless and ultra-responsive, as you'd expect from any Sea-Doo.

To shift to reverse, pull and hold the left lever. Once you release it, your Switch automatically shifts back to neutral. The lever on the left also acts as your brakes should you need to stop or slow down quicker than coasting. It works just like the brake lever of a bicycle. The more you pull the lever, the more braking force you'll have.

dash display functions

Garmin & Fish Finder

Start/Stop Switch

Intelligent Debris Free pump system (iDF)

horn for warning other vessels

bilge blower that clears any potential gas fumes from the engine area

bilge pump- for pumping any water out of the hull

Slow Speed & Cruise Control
Up & Down Arrows
Control Trim

The Switch will always be in neutral when you first start it. You'll see the "N" for Neutral on the display. To shift to forward, tap the throttle lever on the right. To shift back to neutral, give the left lever on the left a tap.



Scan here for a helpful video!

STEERING

The **RIGHT KEYPAD**-controls the gauge display on the dash. You can cycle through several different options on your gauge and choose which info you want it to show. Available info includes engine RPM, vehicle speed, trip meter and more. The gauge shows essential info like fuel on the left and trim position on the right. You'll also see forward, neutral and reverse indicated on the display as well as which driving mode you're in.

And on the bottom of the gauge is where you'll find indicator lights like the check engine light, low fuel indicator and more. If you see any of these warning lights come on, call Steve at (435-840-5586) for what you should do next.

The **LEFT KEYPAD** is where you'll set driving modes, set your trim level, and set your cruise control or slow speed mode.

The up and down arrows control the trim of your jet pump. Raise the trim, and you'll raise the bow. Lower the trim and you'll level out the bow. You'll find that changing the trim level can make for a more comfortable ride depending on water conditions and make for better acceleration when towing tubers, skiers and wakeboarders.

The button on the right enables your slow speed mode and cruise control. With the Switch at idle, press and hold this button and squeeze the throttle lever once. Let go of the button, and you're now in Slow Speed Mode. You can adjust your slow speed setting from 3-9 miles per hour. And you can do it by using the arrows on the right-hand keypad. This is perfect for those slow or no-wake zones.

Cruise control is used for cruising at higher speeds - just like in your car. To activate cruise control, use the throttle lever to accelerate to your desired speed, and tap the same button. To deactivate cruise control or slow speed mode, just pull the brake lever to return to normal operation.

The button on the left sets your desired driving mode: Eco, for when you want maximum fuel efficiency, Normal for a smooth, gentle acceleration, and Sport for when you want maximum acceleration and throttle response.

Intelligent Debris Free Pump System (iDF)

In the center of the keypad sits the iDF button. This system helps unclog a clogged pump intake. That can happen if you're in a weedy area. When your intake is clogged, you might experience a loss of power or feel a vibration as you accelerate. If that happens, stop, push the iDF button and follow the instructions on your dash. Once the iDF system activates, the engine actually shuts down. Don't be alarmed, that's how this particular feature works. The on-screen instructions will tell you when to re-start the engine. Make sure nothing is directly behind you before re-starting. The Switch will restart and the iDF reverses the flow of the pump system, pushing debris out. After 12-seconds the engine will automatically shut off and default into the normal operating functions. Restart the engine again and you're back on your way.



GPS & FISH FINDER

Using a Garmin fish finder can significantly enhance your fishing experience by helping you locate fish and understand underwater structures. Here's a quick guide to get you started:

Power On:

- Turn on the unit by pressing the power button.
- Ensure the transducer is submerged in water for accurate readings.

Basic Settings:

- Set your preferences for units of measurement and display brightness.
- Adjust the sensitivity to filter out unwanted noise and get clearer images.

Understanding the Display:

- The screen shows a real-time feed of what's beneath your boat.
- Fish icons or arches indicate the presence of fish.
- The bottom contour and structure are displayed to help you understand the underwater environment.

Using Sonar Features:

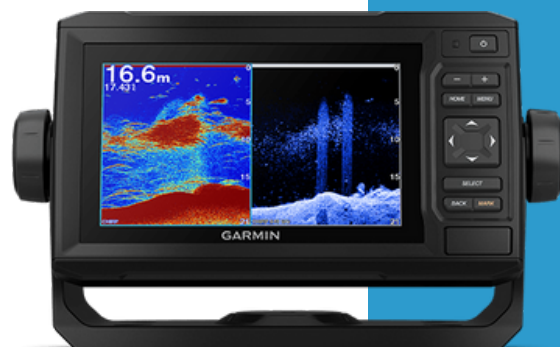
- Switch between different sonar views, such as traditional, ClearVü, or SideVü, for different perspectives.
- Use the zoom function to focus on specific depths or areas of interest.

Interpreting Data:

- Learn to differentiate between fish, debris, and underwater structures.
- Note the depth and temperature readings, which can help you identify ideal fishing spots.

Advanced Functions:

- Utilize GPS and mapping features to mark favorite fishing spots and navigate back to them.
- Customize the display with split-screen views to monitor multiple sonar types simultaneously.





BIMINI TOP

Raise the Bimini

- Undo the Velcro straps on each arm of the Bimini.
- Undo the clips that are keeping the canvas closed.
- Lift the Bimini frame up and secure the support bar in place. You will hear it click into place.
- Pull the frame towards the back of the boat to open the canvas.
- Push the tension arm down and lock it in place.
- Secure all straps so that they do not blow in the wind.

Lower the Bimini

- Undo the straps.
- Unlock the tension arm by pushing the neon yellow tab, then lift the arm.
- Collapse the canvas and frame at the back.
- While holding the frame, release the support arm on both sides.
- Lower the Bimini into the downward position.
- Ensure the frame is centered over the bumper.
- Thread the straps through the opening below the bumper and around the frame to secure it to the boat.
- Make sure the canvas is secured in the Bimini pocket and relatch all straps.

SCAN ME



ANCHORING

Setting an Anchor

1. If possible first determine the water depth where you want to drop anchor. You can do this by using the depth finder on the Garmin. Water depth will determine the correct amount of anchor scope required; scope is the ratio of the length of the anchor rope you will want to lower into the water.
2. A scope ratio of 7:1 (seven feet of scope to one foot of water depth) is usually recommended, when there is room. If, for example, you know the water depth is 10 feet, motor into the wind or current about 70 feet beyond the point where you want to the boat to lie on anchor, and drop the anchor.
3. Then, either let the wind or current carry you back 70 feet, or move the boat in reverse that distance if there is no wind or current.
4. When you've let out enough scope, secure the rope to a bow cleat.
5. Then apply some power in reverse to set the anchor in the bottom.

Make sure to wind and stow the anchor completely before starting the boat.



HOW TO BEACH A BOAT

Examine the shoreline. How deep is the water and how quickly does it shoal? Is there a straightforward path of approach with no obstacles; this includes swimmers, logs, boulders and snorkelers?

Approach slowly. Never throttle hard to get the boat up onto the beach even if you know the area.

Use the depth finder, keep an eye on it and know your draft. Estimate what is about waist-deep water. Watch for current, especially in a river or breaking waves on the shore because both will mess with your landing.

Have an adult hop in and hold the bow of the boat when waist deep.

Turn off and trim up your engine (outboard or sterndrive). Pull the boat ashore bow first—this may take more than one person.

Always secure your boat. You can do this by walking an anchor up the beach, tying off to a stake or securing to a nearby tree.

Remember, the back of the boat will be heavier due to the weight of the engine, so make sure that you don't pull the keel all the way up or it will be tough to leave.

Pull the boat further up once gear and passengers are unloaded; it will be lighter and can be dragged farther up.

When it's time to leave, pull the boat free of the shore until it's floating.

Load up and have an adult push the boat back until they are in waist-deep water. Then have this person hop aboard via the swim ladder.

It is now safe to start the engine and reverse away from shore.

HOW TO DOCK A BOAT

Docking a boat refers to pulling the boat up to a dock as parallel as you can, and then using ropes (dock lines) and nautical knots to secure (fasten) the boat to the dock.

In addition to the docking line, to dock a boat safely, you'll need to utilize the four fenders – large rubber devices that act as a buffer between the boat and the dock or pier and other boats, protecting both from damage.

When you're docking a boat, the boat will be close enough for guests to easily disembark the boat onto the dock (land). Docking usually means the length of your boat (bow and stern) will be secured to the dock, giving you a maximum amount of space for loading and unloading of supplies, as well as maintenance and cleanup of the vessel.

Docking is made easier when there is someone already on the dock to help you, and when the winds and the tide are cooperating. However, just like parallel parking a car, docking a boat gets easier and easier each time you do it.





Deer Creek
2022

SAFETY

TIPS & CAUTIONS

5

Here are some helpful tips and instructions on how to make your trip safer and more enjoyable!

ALCOHOL

Never drink alcohol and go boating. Alcohol use is a leading contributor to fatal boating accidents, causing approximately 15% of the deaths each year. Stay sharp when you're on the water by leaving the alcohol on dry land.

ANGLERS

Anglers should check with local, state, and federal agencies regarding any and all watercraft restrictions.

CELL PHONES

Put down the cell phone. One of the top five contributing factors to boating accidents is inattention. Just like distracted driving on our highways, talking, texting, and other use of cell phones while boating is a growing problem on the water. Don't contribute to this problem. Keep your eyes on the water ahead and around you.

DRUGS

Illegal drug use of any kind is not allowed on the boat.

SAFETY

Make sure everyone wears a life jacket. Insist that your guests all wear a life jacket that fits them well. This can help them stay afloat in rough waters, protect them against hypothermia, and in some cases, can keep their head above water. Everyone 12 years old and under are required to wear a life jacket in Utah.

LIFE JACKET

This boat is equipped with an engine cut-off switch lanyard, please ensure it is attached to the operator at all times while the boat is turned on.

LANYARD

We recommend all renters complete a boating safety course through DWR.

SAFETY COURSE

A wakeless or idle speed is required when operating in a designated slow or wakeless speed area. This also applies whenever you are within 150 feet of another boat, a person in the water, a water skier, shore angler, launch ramp, dock, or other designated swimming areas.

WAKELESS

Check the weather forecast and be prepared for it to change. A calm day can quickly turn ugly on the water. Keep an eye out for changing weather conditions and stay on top of the forecast while boating.

WEATHER

Please let us know about any issues with the boat!



BOAT ETIQUETTE

○ ————— ○
SOME FRIENDLY REMINDERS

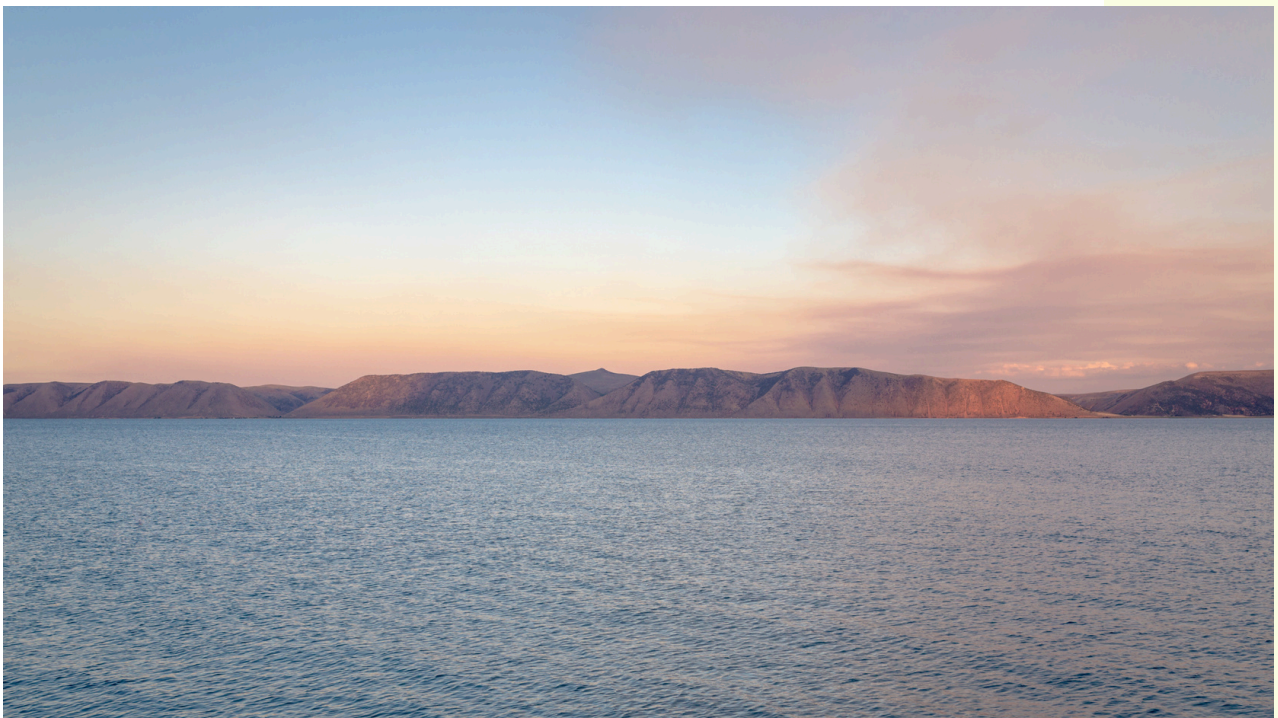
BOATING ETIQUETTE

Boating, even more so than other sports and activities, has an etiquette.

In boating, etiquette is not only about social norms but also about safety, so it's best to learn a few rules before you untie the dock lines.

Rules of the water are the accepted system of right of way, which you must follow to be courteous and safety-minded. These rules are numerous and detailed but if you learn just a few, you should be covered in most recreational boating situations. In the following, the "stand-on vessel" has the right of way, and the "give-way vessel" needs to accommodate the other.

1. In a situation with two boats coming head on, if possible, both vessels turn to starboard (right) and pass port (left side) to port. That way, there's no guesswork about the intentions of the other captain and a collision is avoided.
2. A sailboat under sail has the right-of-way over a powerboat. If the sailboat is running with an engine, it's considered a powerboat regardless if the sails are up.
3. If you're being overtaken, your responsibility is to maintain course and speed. If that scenario puts anyone in harm's way, just slow down and let the other boat pass because the first job of any captain is to avoid a collision regardless of who has the right-of-way.
4. If a vessel approaches you from the right, they're the stand-on vessel.
5. Human powered vessels (kayaks, SUPs, canoes, etc.) have the right-of-way over any other vessel including a sailboat.
6. If another vessel is restricted in its ability to maneuver (due to its size, draft or any other reason) it's the stand-on vessel and you should accommodate it.



BOATING ETIQUETTE

Respect Other Boaters and the Environment

Do not throw your trash overboard. If it's organic like banana peels or fish guts, you may be able to toss it if you're far enough offshore but in harbor or anchorage, nobody wants to swim in your lunch. Plastic never goes overboard under any circumstances.

Asking for Help

Offer to help catch the dock lines of a vessel coming to a dock; however, if the captain or crew wave you off, respect that they have a method and aren't looking for assistance. Stopping to assist a vessel in distress (or at least offering to relay messages to authorities or rescue agencies) is necessary—you're legally obligated to render assistance so long as you don't imperil yourself or your vessel.

What should I do if I'm a guest on a boat and I feel seasick?

First, tell someone, primarily the captain.

Second, try to lie down or look at the horizon and breathe deeply. There's no shame in getting seasick but it can be a dangerous condition that makes you weak and disoriented.



ACCIDENTS ON THE WATER

Accidents can happen, its best to be prepared.



If you are involved in a boating accident, stay calm and do the following:

- Help other people in the accident to the extent you are able.
- Exchange contact information with any injured person or owner of property damaged.
- Notify law enforcement immediately if anyone dies, disappears, requires treatment beyond simple first-aid, or combined property damage exceeds \$2,000.
- Do not leave the scene before rendering aid, exchanging information, and notifying local law enforcement. leaving the scene of an accident is illegal.
- Submit an Accident Report. Complete and sign boat owner/operator accident report form and submit it to Utah State Parks within 10 days. Forms are available from a park ranger or at boating.utah.gov.

CALL US

Call us as soon as you are able to safely.

Take detailed photos and send them to Steve at 435-840-5586 or email them to us at SphereRental@yahoo.com





Des Moines, IA
2022

LOADING UP

AND PREP FOR TRAVEL

7

LOAD THE BOAT ONTO THE TRAILER

Loading a Sea-Doo Switch

When the day's adventures are done and you return to the launch, dock the Switch clear of the immediate launch area while one of your crew members retrieves the vehicle and trailer. If you're waiting with the Switch, doublecheck the bimini top is lowered, and any loose items are properly secured before loading.

When it's your turn to load, back the trailer into the water using the same process as you did to launch. While the trailer is backing in, have another person position the Switch for loading and connect a lead line to the bow.

The trailer should be backed into the water as straight as possible, and at a depth that allows the boat to float over the rear two-thirds of the trailer bunks. The driver should put the vehicle in Park and set the parking brake.

With the trailer in position, pull the Switch in line with the trailer bunks and connect the winch strap. Crank the pontoon up until it's securely in place on the trailer.

If the boat ends up a little crooked on the trailer, try backing down the ramp just a little to allow the boat to float and center itself.

Slowly pull the trailer out of the water and clear of the launch. Park out of the way and remove the drain plugs and any weeds or other aquatic life off the trailer and pontoons. This is important to prevent the spread of invasive species—this is often required by law. Don't drain, clean, or unload your boat while on the ramp.

Remove any items from your Switch that might blow out as you head down the road for home. Check that the dock lines, PFDs, bumpers and other items are properly stored.

If there's a wash down station available, give the boat a quick rinse to remove any aquatic life you may have missed.

Spray the exterior of the boat with 'bead maker' and wipe down with provided towels.

Secure the Bimini Top

There are straps on each side that wrap around the boat rail. This secures the Bimini top down to the boat.



**Watch
This!**





DWR Information

During 2021, DWR conservation officers found that the majority of the violations related to aquatic invasive species laws were due to nonresident watercraft users failing to complete the mandatory education course and fee payment and for boaters failing to remove drain plugs while transporting their watercraft.

Requirements for watercraft users:

- *All watercraft must stop at mandatory inspection stations for the required inspections.
- Remember that “watercraft” includes kayaks, canoes, paddleboards and inflatable rafts.
- Drain all water, and keep all drain plugs removed when leaving any waterbody.
- Nonresidents are required to take the mandatory education course and pay a boater fee before launching a boat in the state of Utah.
- Clean, drain and dry your watercraft after launching at Lake Powell or at other waterbodies infested with quagga mussels or other aquatic invasive species.
- Before launching in any Utah waterbody, all watercraft users must display a **self-decontamination form**.

There are over 40 inspection stations located around Utah, with some located at boat launch ramps and others along highways.



Glacier National Park, WY
2016

CLEANING BEFORE RETURN

8

CLEANING BEFORE RETURNING

CLEANING GUIDELINES

*All personal items have been removed from the boat.

*All trash thrown away.

*All included items must be returned to the storage areas under the seats.

*Add ons must be cleaned and stowed properly. e.g. Grills have been scrapped of excess food.

*All life jackets have been returned with the boat.

Additional fees will apply for Boats and Trailers being excessively dirty upon return.

PREP FEE

The cleaning fee covers the thorough cleaning that we complete after each rental. This includes sanitizing of all surfaces. Exterior Cleaning. And replacement of used items.

RE-FUELING

We will take care of re-fueling the boat after you return.





RETURNING

9

Antelope Island, UT
2021

RETURNING



WHEN

The Boat is due back at your scheduled time on the last day of your rental. You can check what time it is due on your rental agreement. Drop off times are pre-arranged, please call or text to let us know when you will be returning or if you are running late. When dropping off the boat, please keep in mind that all cleaning and removal of your items needs to be done before it is considered "returned". You can do this onsite, but please allow time afterwards for the final walkthrough.

If you are past your scheduled time, you will be subject to additional fees.

CAN I RETURN EARLY

Yes. Please send us a message to schedule a time.



RE-FUELING

We will refuel the boat after your rental. There is no additional charge for this besides the cost of fuel.

The boat must be filled with high octane fuel.

PARKING

Park the Boat halfway up the rocks that are at the back of the house, pull forward towards the fire hydrant, then set the parking break and turn off the engine..



AFTER DROP OFF

After drop off, we will go through a quick inspection to assess major damage, excess mileage, forgotten items and add ons. We will complete a full inspection after you have left, typically the following day. We have up to 72 hours to add any damage claims or report missing items. Your security deposit hold will be released after that.

We hope you enjoyed your water adventure!



Mirror Lake, UT
2022

FAVORITE 10

PLACES TO VISIT

PLACES TO SEE

WILLARD BAY RESERVOIR

Willard Bay Reservoir is a close and convenient location for anyone near Ogden, Logan, or Salt Lake. With plenty of options for boating, fishing, and camping, this reservoir would make for an ideal day or weekend out.



FLAMING GORGE RESERVOIR

Flaming Gorge is a popular spot for Utahns wanting to head the opposite direction of the ever-busy area of Southern Utah. One of the visual appeals for the Flaming Gorge National Recreation Area is the presence of the Ashley National Forest, which provides green contrasts to the orange/red “flames” of the local geology.



BEAR LAKE

Bear Lake and its surrounding areas is famously known as a popular summer destination. Its turquoise-blue waters are quite the sight to behold, even prompting the unique name, the “Caribbean of the Rockies.”



JORDANELLE RESERVOIR

Jordanelle Reservoir is part of Jordanelle State Park, which offers more than just Utah boating activities. You can camp, hike, bird watch, and more!



DEER CREEK RESERVOIR

A very popular location for visitors all over Utah County because of its relative proximity to multiple cities, this reservoir is very similar to the Jordanelle Reservoir and provides just the right amount of excitement for a day or weekend outing.



SPHERE RENTAL TERMS & CONDITIONS



Pontoon Boat and Trailer

Definitions are as follows:

“Contract” means all terms and conditions found in this form, and addenda and any additional materials we provide at the time of Rental. “You” or “your” means the person identified as the renter on this form, any person signing the Contract and Agreement, any Authorized Driver and any person or organization to whom charges are billed by us at its or the renter’s direction. All persons referred to as “you” or “your” are jointly and separately bound by this Contract. “We,” “our,” “us,” “I,” or “my” means the private owner(s) or the property manager renting the Vehicle to you. “Web Platform” means the rental search engine that may have been used by the private owner(s) and manager(s) as an intermediary. “Authorized Driver” means you and any additional driver approved and listed by us on this Contract. “Agreement” means all terms and conditions found in these Terms & Conditions, any addenda and any additional materials that we provide and that you sign at the time of rental. “Boat” means the motorized recreational vehicle and trailer for towing identified in this Agreement and any boat we substitute for it, all the Boats equipment, keys and Boat documents. The boat is specified in the booking documents as well as the front page of the departure form. “Charges” means the fees and charges that are incurred under this Agreement. “Rental Period” means the period between the time you take possession of the Boat until it is either returned to or recovered by us and checked in by us. ‘Loss of Use’ means the loss of our ability to use the Boat for our purposes due to damage or loss during this rental, irregardless of the boat being scheduled for rental or not. You owe the Loss of Use for the time the boat is out of service as determined by the rental rate on the contract, times the number of days out of service, regardless of our fleet utilization.

Important Disclosures

- This is a contract for the rental of a Boat. We may repossess the Boat at your expense without notice to you if the Boat is abandoned or used in violation of law or this Agreement.
- The Boat may be equipped with global positioning satellite (“GPS”) technology or another telematics system and/or an event data recorder, and privacy is not guaranteed. If it shows its location to be in an inappropriate body of water, out of the country or if it is disabled or ceases to function for any reason, You agree to forfeit your entire Security Deposit.
- We make no warranties, express, implied or apparent, regarding the Boat or Optional Equipment, no warranty of merchantability and no warranty that the Boat or Optional Equipment is fit for a particular purpose.
- By signing this Contract, you understand and agree that you assume all liability, whether collision, damage, or liability for the entire duration of the Rental. You agree to indemnify the Owner(s) and Property Manager(s) of the RV in any suit brought against them.
- Sphere Rental, LLC offers NO insurance coverage for liability or equipment damages sustained during your rental period. Please check with your home owner and auto insurance policy to see if there is some type of coverage available to you.
- You are financially responsible for all damage (interior and exterior- including boat, its equipment and the trailer) to, or loss or theft of, the Boat, which includes the cost of repair or the actual cash value of the Boat if it is not repairable or if we elect not to repair it, loss of use, diminished value of Boat caused by damage to it or repair of it, missing equipment, connected with any damage claim whether or not you were at fault. You owe the Diminution of Value, which is the difference between the retail market value of the Boat before the damage and the value of the Boat after the damage, whether we repair the Boat or not.
- You must report all accidents, incidents of vandalism, or theft involving the Boat to us and the police within 24 hours of occurrence.

This Pontoon Boat Rental Agreement is an official binding contract between the Renter(s), Passengers, and Sphere Rental, LLC. Renters must understand that he/she is known to Sphere Rental, LLC as the renter(s), and is the only person allowed to operate the Pontoon Boat for the entire rental period.

Terms and Conditions

1. You agree that all information you have provided is true and valid.
2. You have truthfully disclosed the identity and proper age of all drivers. You agree that all authorized driver information has been reported accurately and no unauthorized drivers shall operate the Boat. All authorized drivers must have a valid driver’s license that is provided to us.
3. Due to the high volume of rentals, it is important that you arrive at the pick up location on time. A \$50 fee will be charged to the credit card on file for arrivals more than 10 minutes past the scheduled time for pick up or delivery, unless prior arrangements have been made.
4. You agree to pick up the Boat at the specified location at the pre-arranged time. IF you have scheduled an 8:00 AM pick up, you are expected to arrive at 8:00 AM. IF YOU ARRIVE LATER THAN 8:45 AM, YOUR PICK UP TIME WILL BE REVERTED TO 6:00 PM. YOU WILL NOT BE REFUNDED THE AM PICK UP FEE.
5. No more than 7 passengers or 987 lbs are allowed on the Boat at one time.
6. The pontoon boat is to be operated only during daylight hours.
7. No other motor is to be mounted or attached to the boat.
8. You understand that a prep fee does not cover excessive dirt or uncleanliness.
9. You understand that you are solely responsible for ensuring the safety and well-being of your guests that accompany you on the boat. This includes, but not limited to: wearing properly fitting life vests, utilizing the orange flag when people are in the water, and driving the boat in a safe manner.
10. We offer certain Optional Equipment, including grills, outdoor kitchen accessories, old fashioned ice cream makers, ice makers, etc upon request and subject to availability for your use during the rental at an additional charge. All Optional Equipment is rented AS IS and must be returned to us at the end of the rental in the same condition as when rented.

RENTAL AGREEMENT TERMS AND CONDITIONS (“Terms & Conditions”)

Pontoon Boat and Trailer

11. PETS: Well-behaved, house broken pets are welcome, unless they pose a health or safety risk or they are prohibited by law. You are financially responsible for any damage done by a pet, including deep cleaning due to accidents. Pets may NEVER be left unattended on the Boat. All animals must be declared during pick-up and attended to and under control at all times. You will be assessed any financial responsibility for damages or deep cleaning from your Security Deposit.
12. Do not drive the Boat Trailer on anything but a well maintained road.
13. Certain items are considered non-essential, convenience items. If they fail to work during a trip, no adjustments will be made to your charges. No troubleshooting by the Property Manager(s) or Owner(s) during the trip will be guaranteed for these items if there are issues. This can include, but not limited to: add on items, Bluetooth Radio, the Garmin Navigation and fish finder.
14. The following acts or uses of the Boat are prohibited and may result in forfeiture of the entire security deposit: (a) driving the Boat: (i) by anyone who is not an Authorized Driver, or by anyone whose driving license is suspended in any jurisdiction; (ii) by anyone under the influence of drugs or alcohol; (iii) by anyone who obtained the Boat or extended the Rental period by giving us false, fraudulent, or misleading information; (iv) in furtherance of any illegal purpose or under any circumstance that would constitute a violation of law other than a minor traffic citation; (v) to carry persons or property for hire; (vi) in any race, speed test or contest; (vii) to carry dangerous or hazardous items or illegal material; (viii) outside the United States and Canada; (ix) when loaded beyond its capacity, as determined by the manufacturer of the Boat; (x) when driven through or under an underpass or other structure without sufficient overhead or side clearance; (xi) when it is reasonable to expect you to know that further operation would damage the Boat; (xii) in a manner that causes damage to the Boat due to inadequately secured cargo; (xvi) driving the trailer on unpaved or very rough roads; or (b) failing to summon the police to any accident involving the Boat that caused personal injury or property damage; (c) damaging the Boat by your intentional, wanton, or reckless conduct; (d) damaging the Boat by an animal transported in the Boat; (e) damaging the Boat by sitting, standing, or lying on the Bimini Top; (f) damaging the Boat by placing tire chains, signs, lettering or painting on the Boat; (g) damaging the Boat by placing speakers or other sound equipment on the deck or sides of the Boat; (h) disabling the GPS if so equipped.
15. You agree not to take the Boat outside of the continental United States without prior written permission from the manager(s)/owner(s).
16. The Vehicle is not permitted to go to festivals, races, or tournaments without prior approval. Applicable fees may apply for pre or post rental prep and/or cleaning.
17. Alcohol/Drug Use of any kind is NOT permitted by the operator of the Boat. Disregard of this rule has the potential forfeiture of your entire security deposit, at the manager’s/owner’s discretion.
18. The manager(s)/owner(s) are not responsible for the loss of vacation, personal or business time, or any incidental expenses incurred by the renter, resulting from breakdown or any other delay problems. The manager(s)/owner(s) shall be responsible for completing any necessary repairs and returning the Boat to Rental condition as promptly as possible. Unless authorization is obtained from the manager(s) or owner(s), no repairs, replacement of parts or service shall be completed during the Rental period.
19. If the boat trailer is equipped with a GPS Tracker and it shows you exceed 70 MPH, you will be assessed a \$49 safety assessment for each recorded event.
20. You are responsible for checking and maintaining all fluid levels during the rental period.
21. You are responsible for checking and maintaining the Boat Trailer tires during the rental period. This includes replacing tires, if necessary, at your expense.
22. You will indemnify, defend, and hold us harmless from and against any claim arising out of unsafe fueling practices committed by you or your agent.
23. You agree to return the vehicle in the same condition in which it is received. This includes odor-free and clean. All equipment provided in the Boat must be returned at the end of your rental period in the same condition as when it went out. You will be charged for replacement cost, plus any convinces fees, for exact replacement of all damaged or lost items during your rental period.
24. You agree to return the Boat no later than 6:00 PM Mountain Standard Time, on the last date of your rental. Return the motorhome on time to avoid a late return fee of \$100.00 per hour. If you are unable to return by 9 PM on the last day of your rental, you will be required to extend your rental by an additional day. And then make arrangements to return the RV the following day. Additionally, you will also be assessed any additional expenses incurred due to tardiness or damage affecting subsequent renters. You must return the Vehicle to the place of pickup or other location that we specify, and in the same condition that you received it.
25. We have 72 hours from the time you return the Boat to inspect it for damage not noticed at check in. You have 72 hours from the time we submit the final check-in forms to dispute any damages or other charges.
26. We make no warranties, express, implied or apparent, regarding the Boat or trailer, no warranty of merchantability and no warranty that the Boat is fit for a particular purpose.
27. Renter(s) acknowledges and understands that the Owner(s) cannot guarantee against mechanical failures of the rental equipment. Renter(s) agrees to immediately notify Owner(s) of defective or non-working units. Owner(s) will make every reasonable effort to repair or replace defective units as quickly and efficiently as possible. Repair due to normal wear and tear on the Equipment will be made by the Owner(s). Should a repair person make a call to repair or replace a unit that is found to be in working order and the problem was due to Renter(s) oversight or neglect or misuse, Renter(s) agrees that the repair call costs may be charged to the Renter(s) credit card on file.
28. You release us from all claims for, loss of, or damage to, your personal property or that of any other person, that we received, handled or stored, or that was left or carried in or on the Boat, whether or not the loss or damage was caused by our negligence or was otherwise our responsibility. We agree to keep items you forgot in the Boat up to 30 days past your rental. You must make arrangements to have items shipped or other wise picked up from our facility. Past 30 days, all items will be considered abandoned and will be disposed or donated.

RENTAL AGREEMENT TERMS AND CONDITIONS (“Terms & Conditions”)

Pontoon Boat and Trailer

29. A waiver by us of any breach of this Contract is not a waiver of an additional breach or waiver of the performance of your obligations under this Contract. Our acceptance of payment from you or our failure, refusal or neglect to exercise any of our rights under this Contract does not constitute a waiver of any other provision of this Contract. Unless prohibited by law, you release us from any liability for consequential, special or punitive damages in connection with this Rental or the reservation of a Boat.

30. You have read and agree to all rental rates.

31. No refund will be given if you prepay for a service but do not use it.

32. You agree to pay any and all charges at the end of your rental that are assessed by the owners, under this Contract. This can be for, but not limited to the following: the period of time which you take the Boat, gasoline refilling, damages, replacing lost or missing items, or additional cleaning fees, fines, penalties, forfeitures, towing and storage charges and other assessed charges, all traffic, toll or parking violations, fines, penalties, citations, forfeitures, “loss of use” fees, towing charges and other expenses involving the Boat assessed against us or the Boat. We may use your card on file or your security deposit to pay monies owed us under this Contract.

33. You agree to pay all costs associated with locating and recovering the Boat, if you fail to return the Boat as required by the terms of the Rental Contract. You agree to pay \$499, fuel cost plus \$1/mile for every mile between the renting location and the place where the Boat is returned, repossessed or abandoned, plus any additional recovery expenses we incur, including but not limited to airline flights and hotel/KOA accommodations for pickup and return to our location.

34. If we have to take you to court to collect any monies due, you will be responsible for any and all court fees and associated attorney fees.

35. You owe an Administrative Fee of \$250 for our handling of any claim, documentation for court proceedings, or otherwise enforcing our rights under this Contract.

36. You agree to pay a chargeback management fee of \$250 for any instance that you attempt to reverse any rental fees (including, but not limited to, rental cost, damages and replacing items).

37. Failure to promptly report damage or accidents will lead to a \$250 Damage Assessment Fee.

Towing the Boat Trailer:

You represent and warrant that: the towing vehicle that you use during the Rental Period has the capacity to tow the Boat; any load will be properly loaded and placed for safe operation of the Boat; and you will ensure that when towing the Boat, it is properly secured and connected to the towing vehicle and will use safety chains, cables, locking devices and other similar devices meeting the requirements of applicable law.

By signing below, you: agree to the terms and conditions of this Agreement, the Rental Contract, Departure Form, the Terms and Conditions, and any other document that you sign; acknowledge that you had an opportunity to read the entire Agreement before signing; authorize us to process a separate credit/debit card voucher, from your card on file or from your security deposit, in your name for all Charges; and authorize us to release your billing/rental information to third parties for billing/processing purposes. By signing below, you agree you are absolutely responsible for any and all damage done to the rented boat and trailer, regardless of fault or reason for the damage, including any collision or comprehensive loss. This includes the retail estimate of the cost to repair the Boat to its pre-accident condition.

The undersigned hereby agrees that he/she will indemnify and hold harmless Sphere Rental LLC and its owners for all personal injuries, property damages or any other damages to any and all third parties, including, but not limited to, operators, and passengers or other watercraft and minor children under the undersigns custody, care and control, as a result of any and all activities related to the rental, operation, or use of equipment provided by Sphere Rental, LLC, even if such damages arise out of the negligence of Sphere Rental, LLC.

The undersigned states that he/she has had sufficient time to review this contract and the Waiver and Release statements and has had the opportunity to as any questions associated with these documents. The undersigned further states that he/she has carefully read these documents, understands its contents, has signed this Release at his/her own free act. By executing this document, the undersigned warrants that he/she is waiving any right he/she may have to bring a legal action to assert a claim against Sphere Rental LLC for the companies negligence.

If the Boat is a total loss, or at our discretion we make a business decision not to repair the Boat, you owe the retail fair market value of the Boat at the time of damage, less any proceeds from the sale of the un-repaired boat. If the Boat is a total loss, you are responsible for any and all fees to pick up a replacement boat and replace all complimentary boat equipment that were included on your rental. If the boat is not returned, you are responsible for any and all fees for us to pick up and return the boat to our facility as stated above.

If any provision of this Contract is deemed void or unenforceable, the remaining provisions are valid and enforceable. No term of this Contract can be waived or modified except by a writing that we have signed. You agree to indemnify us, defend us, and hold us harmless from all claims, liability, costs and attorney fees we incur resulting from or arising out of, this Rental and your use of the Boat.

This Contract constitutes the entire Contract between you and us. All prior representations and Contracts between you and us regarding this Rental are merged into this Contract. The laws of the state of Utah and Tooele County govern this Contract.

All Charges are subject to final audit.





Great Salt Lake, UT

FEEDBACK 12

WE APPRECIATE YOUR

FEEDBACK

DEAR GUEST

We hope you had a wonderful time in our Motorhome!

As a small business, reviews are essential to build trust with potential guests.

We would really appreciate it if you could take 90 seconds to give us a five star review on Google.

Simply scan the code below to get started.

We have also added a guest book to our Motorhome.
If you have the time, we would love to hear about your adventures!

Thank you in advance for your help and support.

We look forward to having you back
for your next vacation!

Best Regards,

Steve &
Melissa



THANK YOU FOR YOUR FEEDBACK!

**WE CAN'T
WAIT**



*To See You
Again!*